

EQUIPMENT SHEET

BALDUR
BACKHOE DREDGER

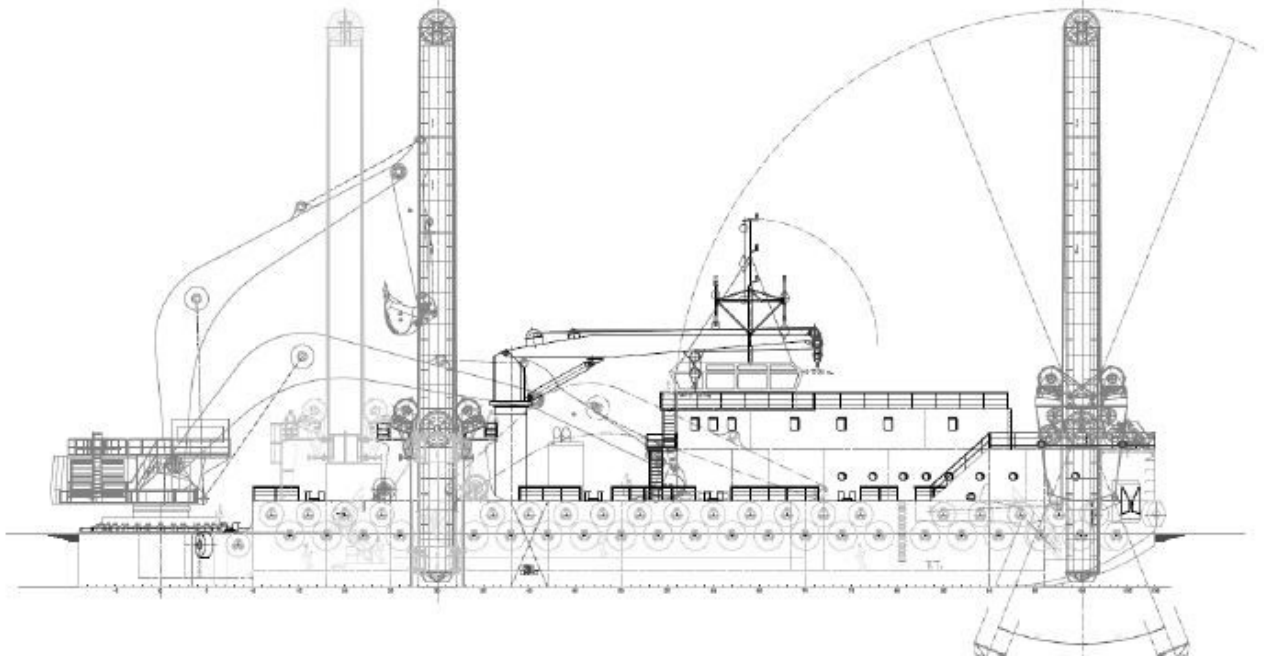


CONSTRUCTION/CLASSIFICATION

Built by	PT ASL Shipyard-Batam/Indonesia
Year of construction	2009
Classification	B.V. Unrestricted navigation

MAIN DATA

Ownership	Boskalis Australia Pty Ltd
Gross tonnage	2,104
Length overall	73.1 m
Moulded depth	5.5 m
Moulded breadth	19.0 m
Normal draught	3.38 m
Spud length	34 m
Type of excavator	Komatsu PC5500 (Boskalis Mod.)
Bucket capacity mud bucket	24 m ³
Bucket capacity H.D. bucket	17.5 m ³
Max. dredging depth	19.00 m
Anchoring system	3 spuds / Tilting spud
Total installed power	3,161 kW
Excavator engine power	2,200 kW



SIDE VIEW