



CONSTRUCTION/CLASSIFICATION

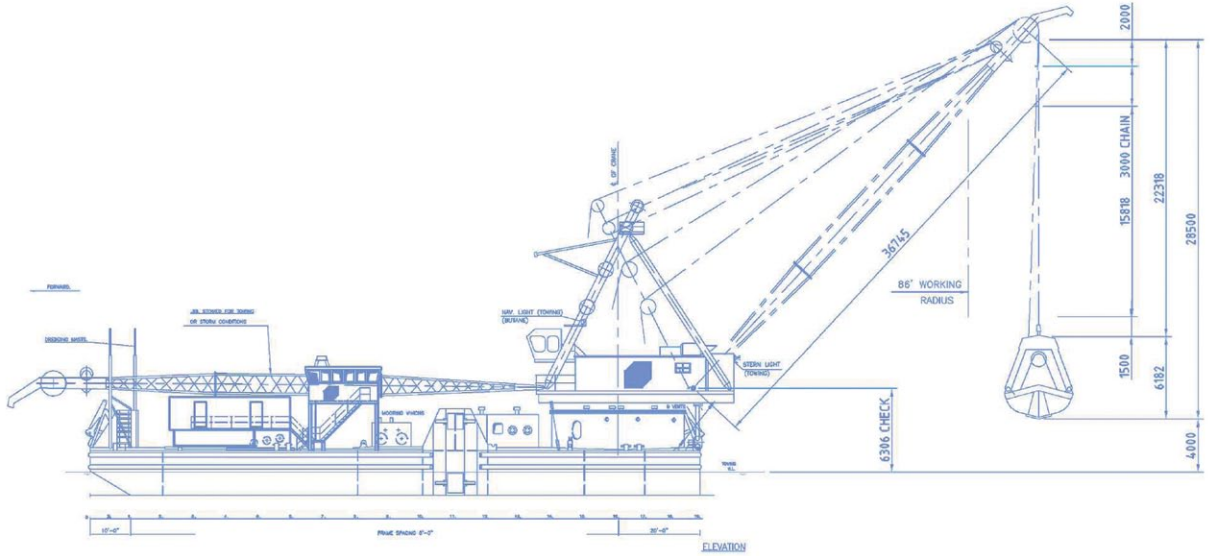
Built by	Favell Mort Ltd, Sydney, Australia
Year of construction	1970
Classification	Lloyd's Register +100A

FEATURES

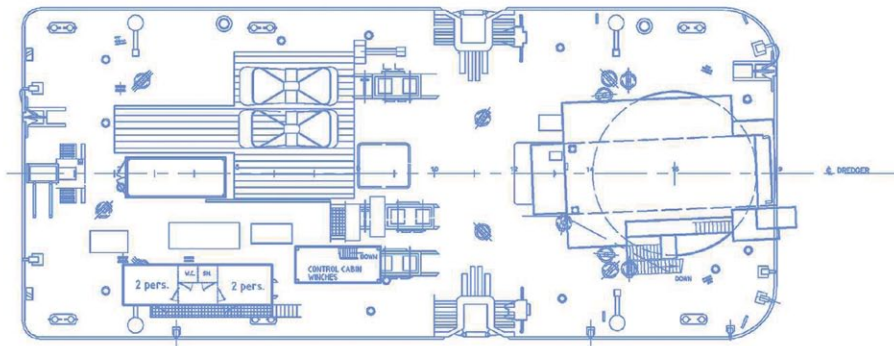
Capable of dredging with rapid cycle times to depths of -40m.
Close tolerance dredging alongside wharf faces.
Ability to work in exposed locations.
Swell compensated barge fleeting winch system.
Clamshell bucket or dragline configuration.

MAIN DATA

Gross tonnage	891
Net tonnage	267
Length overall	54.60 m
Length pontoon	45.72 m
Breadth	19.81 m
Moulded depth	3.35 m
Normal draught	1.99 m
Type of crane	Ringer Crane (Clyde Whirley, type 32-DE-120)
Bucket capacity mud bucket	10.00 m ³
Bucket capacity H.D. bucket	12.00 m ³
Max. dredging depth	45.00 m
Anchoring system	2 fixed and 1 walking spud for operational depths to 15.20 m
Total installed power	1394 kW
Crane engine power	536 kW



SIDE VIEW



TOP VIEW DECK LEVEL